

ASSEMBLY INSTRUCTIONS: TRASH RECEPTACLE 600001-600101 Revision A

1. Unpack and lay out pieces to assemble. Verify that the parts, quantity, and dimensions match those on the enclosed bill of material.
2. Begin by attaching the three support tubes (item 3 – 100091) to the base (item 2 – 100089). The tube ends fit into receiving holes in the base casting. The screws (1/2-13 X 1 1/2) go through the casting and thread into the tapped blocks welded into the ends of the tubes. Tighten the screws snugly but not overly tight at this point.
3. After all three tubes are attached, place the door frame (item 4 – 100092) with the curved side outward and insert the lower pin into the receiver hole in the base casting. Align the door frame vertically and place the top casting onto the tubes making certain that the upper pin of the door frame inserts into the receiver hole in the top casting and the tube ends fit into the receiving holes in the top casting. The screws (1/2-13 X 1 1/2) go through the casting and thread into the tapped blocks welded into the ends of the tubes. Use a nylon washer on each of the three screws at the top casting to protect against moisture. Tighten the screws at the top and base casting securely.
4. Begin installing the 2X4 boards (item 10) around the perimeter of the castings. Separate the two boards [one board (item 8 – 100104) has a rabbet cut into it to fit over the door hinge pin. One board (item 9 – 100103) has a hole drilled through it for the latch mechanism] from the rest as they are used only on the door frame. Place a 2X4 board against the casting flanges top and base so the board edges fit between the lugs on the flanges. Center the board and line up the predrilled holes with the holes in the casting flanges. Use the 1/4 x 1 screws to attach each board to the casting. Attach all the boards between the three main support tubes.
5. Begin at the hinge end of the door frame and place the 2X4 (100104) with the rabbet over the hinge pin. Center the board and line up the predrilled holes with the framing holes. Use the 1/4 x 1 screws to attach the board to the frame. Attach three more 2X4 boards to the door frame in the same manner. Check that there is a nominal gap (3/8 inch) between board edges before tightening screws.
6. Attach the door tube (item 6 – 100100) to the door frame using 1/4-20 X 3/4 machine screws with 1/4 lock washers. The door tube mounts at the center of the door frame. Attach one more 2X4 to the side of the door tube. See diagram 3
7. Attach the 2X4 (100103) with the latch hole at the top to the side of the 2X4. Again, center the board and line up the predrilled holes. Use the 1/4 x 1 screws to attach the board to the frame
8. Attach the remaining two 2X4 boards to the door frame in the same manner, making certain there is clearance top and bottom for the door to operate and a nominal gap between boards. Check that the door swings open and closes easily.
9. Place the top cover on the top casting and align the predrilled holes in the cover with the tapped holes in the casting. NOTE: with the domed top having a closed lid, align the top so the lid is at the position you desire. Use the 1/4-20 X 3/4 machine screws with 1/4 lock washers to attach the cover to the top casting. Apply a liberal bead of sealant completely around the inside corner of channel of the top plate where the domed top will seat. Kit 71-SEALANT
 - a. Follow the instruction sheet enclosed with kit and the directions on the furnished tube of GE Silicone II Window and Door Sealant for application and cleanup.
10. Install the locking mechanism to the doorframe board with the hole through it. Using the jam nut secure the “lock barrel” with in the board. Using the “flat unformed” lock tang, mount tang to the lock barrel using the #10 screw. Using a pliers bend the lock tang, to the desired angle, to secure the door. Check that the lock keeps the door closed and will allow the door to open. Install the 1/2-13 X 5/8 screw with nylon washer at the hole in the top casting over the door frame.
11. The only difference between 600001 and 600101 is the type of top cover – it will be either a three holed domed top (600101) or a dome top with a closed lid (600001)
12. Assembly diagrams follow showing part assemblies
13. Mount after assembly with 4 concrete anchors (see Diagram 4)

ASSEMBLY AND MOUNTING INSTRUCTIONS – FORESITE DESIGNS®
TRASH RECEPTACLE, PARK AVENUE™ DESIGN 600001-600101

PAGE 2

DIAGRAM 1: ASSEMBLY PARK AVENUE TRASH RECEPTACLE 600101-600001

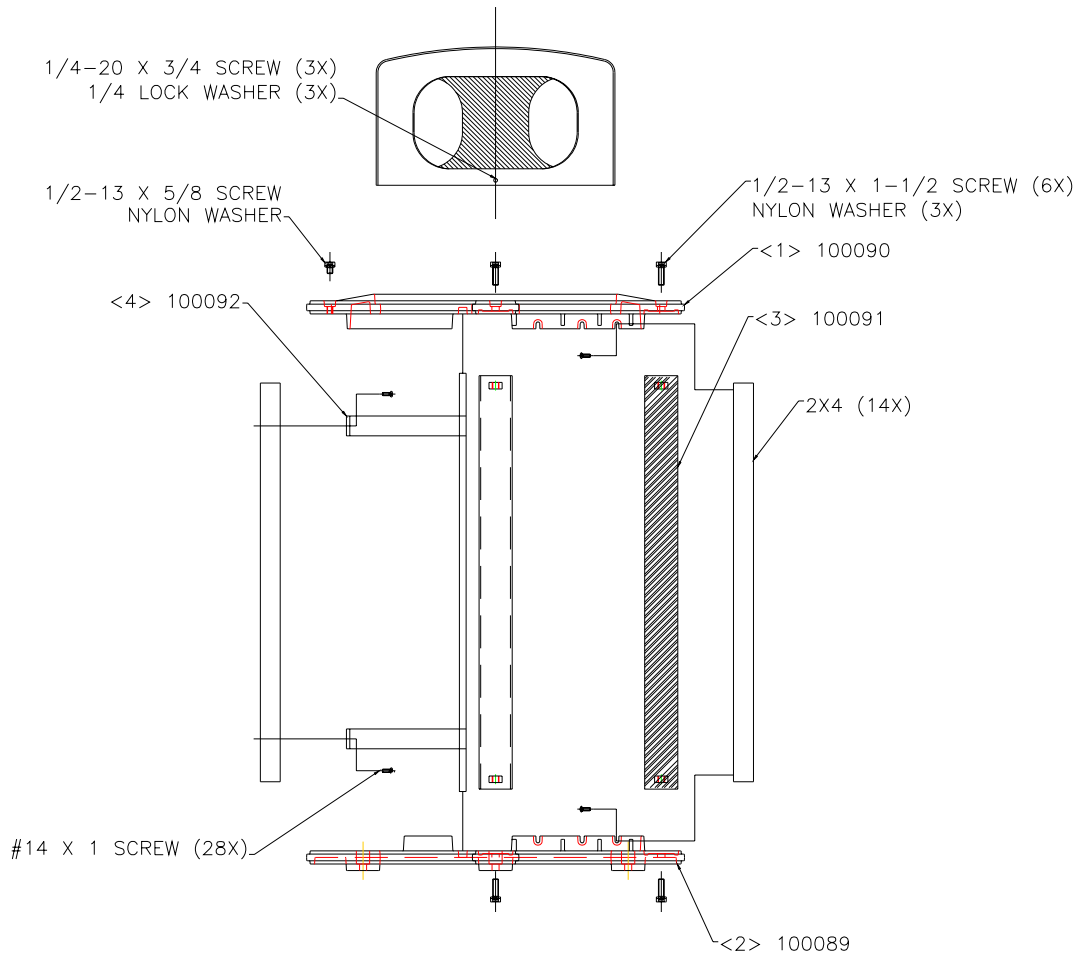


DIAGRAM 2: ATTACHING SUPPORT TUBES TRASH RECEPTACLE 600101-600001

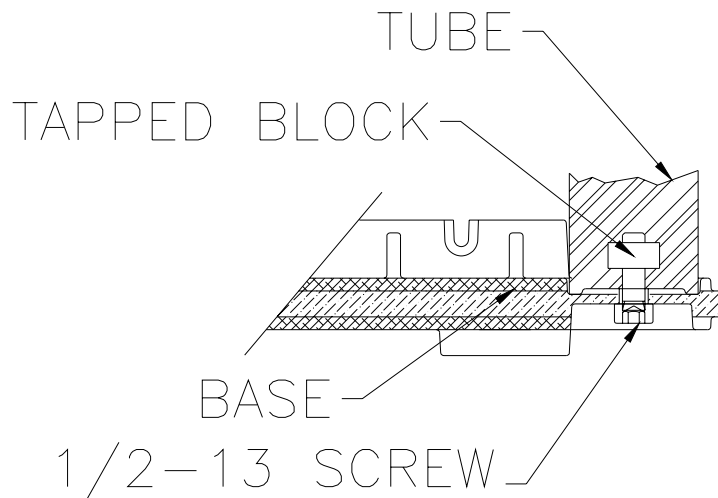


DIAGRAM 3: DOOR FRAME ASSEMBLY PARK AVENUE TRASH RECEPTACLE

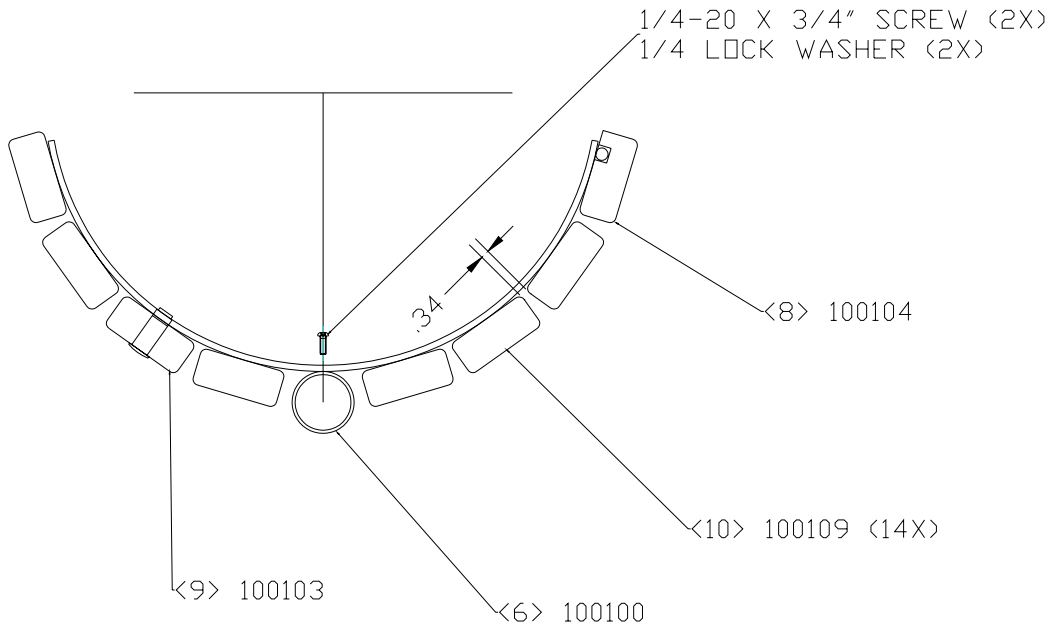
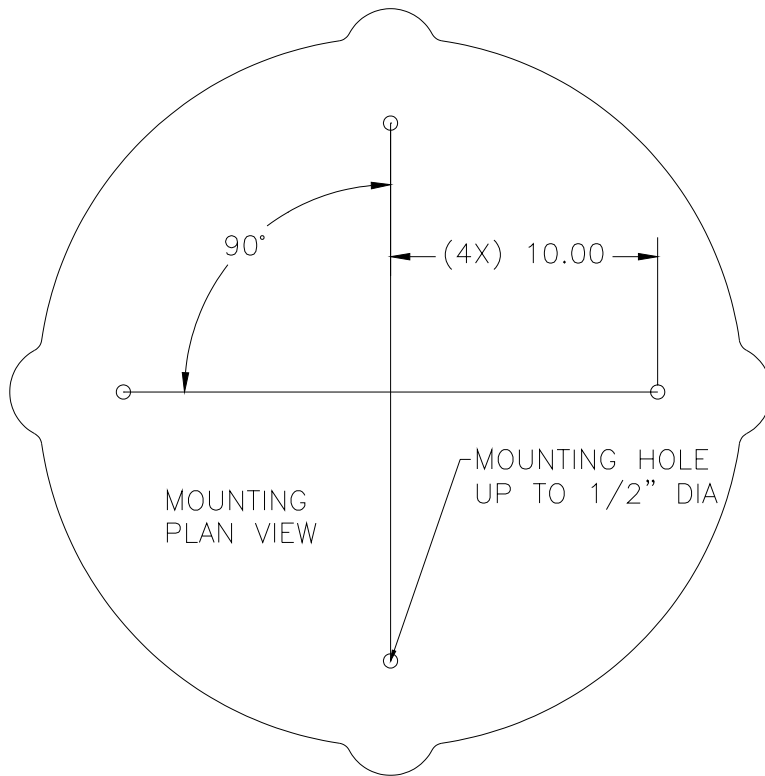


DIAGRAM 4: MOUNTING DIMENSIONS PARK AVENUE TRASH RECEPTACLE – Through base –
Use concrete anchors four places as shown



BILL OF MATERIAL – 600001		
PART #	DESCRIPTION	QTY
72-100090	TOP CASTING	1
72-100089	BOTTOM (BASE) CASTING	1
72-100091	TUBE (SUPPORT)	3
72-100092	DOOR WELDMENT	1
72-100096	DOME TOP WITH LID	1
72-100100	DOOR TUBE	1
71-0023	FASTENER KIT	1
71-SEALANT	SILICONE SEALANT TUBE AND INSTRUCTIONS	1
72-100104	ROUND CORNER DOOR GROOVED (2X4)	1
72-100103	ROUND CORNER DOOR LATCH (2X4)	1
X2624XX	2X4 X 30.25 ROUND CORNER	14

BILL OF MATERIAL – 600101		
PART #	DESCRIPTION	QTY
72-100090	TOP CASTING	1
72-100089	BOTTOM (BASE) CASTING	1
72-100091	TUBE (SUPPORT)	3
72-100092	DOOR WELDMENT	1
72-100095	DOME TOP WITH OPENINGS	1
72-100100	DOOR TUBE	1
71-0023	FASTENER KIT	1
71-SEALANT	SILICONE SEALANT TUBE AND INSTRUCTIONS	
72-100104	ROUND CORNER DOOR GROOVED (2X4)	1
72-100103	ROUND CORNER DOOR LATCH (2X4)	1
X2624XX	2X4 X 30.25 ROUND CORNER	14