



17. Locate one bull nose board on the weldment at a distance of 8 1/4 inches from end of the board to edge of weldment plate with flat edge of board on the 7 1/8 inch marks. Make certain curved edge is facing bend in plate. Clamp board in place. See diagram 3. **IMPORTANT: Make sure that the distance between the two bull nose boards where seat meets the back measures 4 inches or less. Adjust the board on the back to meet 4 inch maximum dimension.**
18. Drill 5/32 diameter pilot hole (four places) into the board and install four 1/4 x 2 screws into the board. (use third line of 2 holes in metal plate of weldments as a drill guide) Diagram 3.
19. Set one rectangular board at a distance of 8 1/4 inches from plate side edge to end of board with flat edge of board on the 2 7/8 inch mark. Clamp board in place. Suggest placing a 3/4 inch thick spacer between the bull nose and rectangular board at each end to maintain 3/4 inch gap. See diagram 3.
20. Drill 5/32 diameter pilot hole (four places) into the board and install four 1/4 x 2 screws into the board. (use third line of 2 holes in metal plate of weldments as a drill guide) Diagram 3.
21. Locate second bull nose board at a distance of 8 1/4 inches from plate side edge to end of board with a gap distance of 3/4 inches between bull nose and rectangular boards at both ends. Suggest placing a 3/4 inch thick spacer between the bull nose and rectangular board at each end to maintain 3/4 inch gap. Clamp board in place. See diagram 3.
22. Drill 5/32 diameter pilot hole (four places) into the board and install four 1/4 x 2 screws into the board. (use third line of 2 holes in metal plate of weldments as a drill guide) Diagram 3.
23. Place center support plate 10085 centered between two weldments. See diagram 3. Align the boards and clamp them to the plate to maintain the 1/2 inch gap and to remove any curvature from the boards. Drill 5/32 diameter pilot hole (six places) into the board and install six 1/4 x 2 screws into the boards using the plate as a drill guide.
24. Check square ness of boards with plates before tightening all screws.

DIAGRAM 2: BENCH WITH ARMS 4 FOOT 150401 SHOWN (ATTACHING SEAT BOARDS)

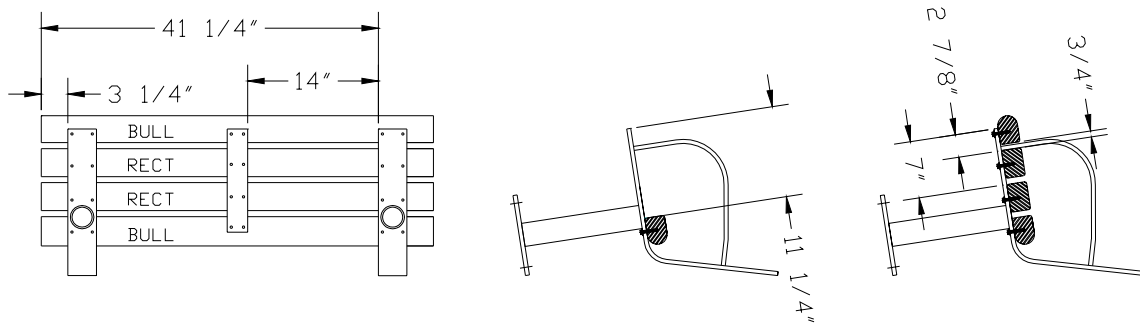
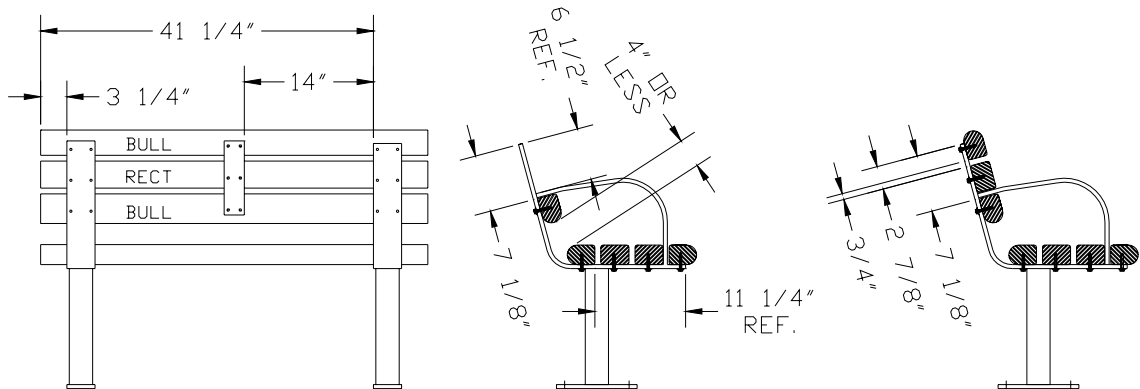


DIAGRAM 3: BENCH WITH ARMS 4 FOOT 150401 SHOWN (ATTACHING BACK BOARDS)

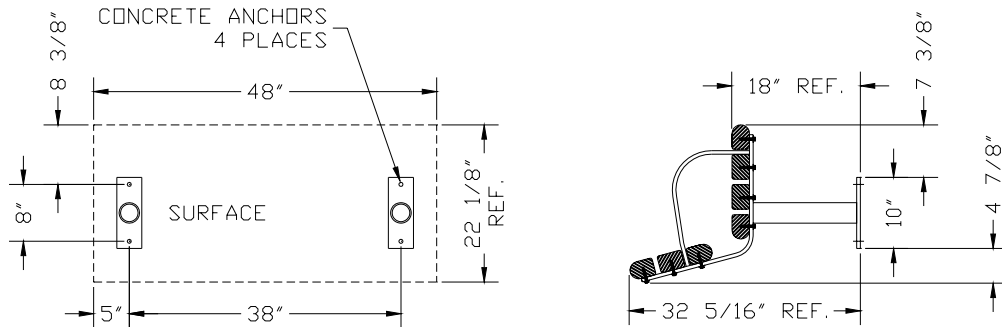


MOUNTING INSTRUCTIONS: BENCH WITH ARMS 4 FOOT LENGTH 150401, 150402, and 150403

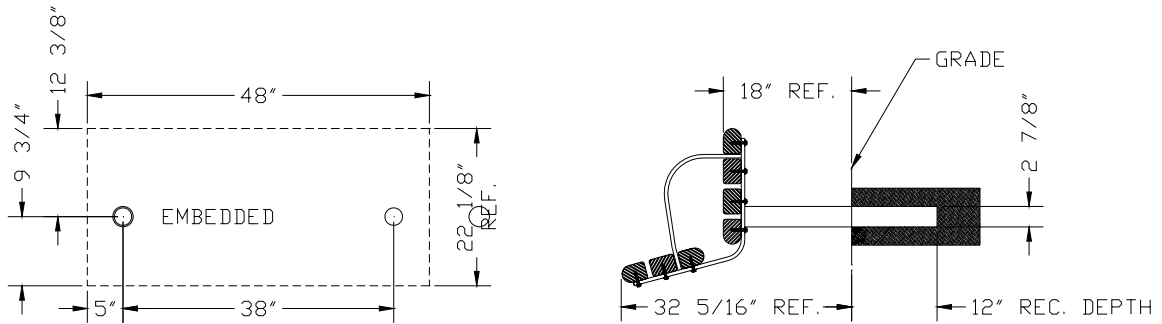
1. Surface mount bench 150401 mounts with four ½ inch anchors into concrete surface at dimensions as shown on diagram 3.
2. Embedded mount bench 150402 mounts by setting in filled holes at dimensions as shown on diagram 3.
3. Portable bench 150403 will rest on any flat, even surface-no mounting required

DIAGRAM 4: BENCH WITH ARMS 4 FOOT LENGTH, SHOWN ARE  
 SURFACE 150401 CONCRETE ANCHORS 4 PLACES  
 EMBEDDED 150402 HOLES 2 PLACES  
 PORTABLE 150403 NO MOUNTING

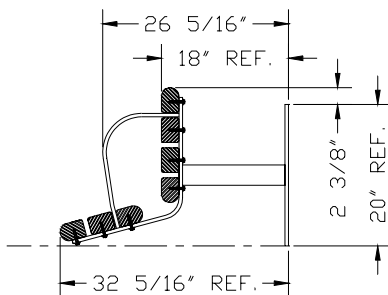
SURFACE 150401



EMBEDDED 150402



PORTABLE 150403



<b>BILL OF MATERIAL – 150401</b>		
<b>PART #</b>	<b>DESCRIPTION</b>	<b>QTY</b>
72-100004	WELDMENT, BENCH, SURFACE MT WITH ARM	2
	3 X 4 X 48” BULL-NOSE PLASTIC LUMBER	4
	3 X 4 X 48” ROUND CORNER PLASTIC LUMBER	3
72-100084	STRAP 2-1/2 X 12-3/4	1
72-100085	STRAP 2-1/2 X 9-1/4	1
71-0014	FASTENER KIT INCLUDES:	1
71-TP142SS	SCREW, BUTTON HEAD STAINLESS 14 X 2 SECURITY	44
71-532HEXKEY	HEX KEY, 5/32” SECURITY	1
71-532BIT	BIT, DRILL 5/32” DIAMETER	1
71-532HEXBIT	HEX BIT, 5/32” HEX SECURITY	1

<b>BILL OF MATERIAL – 150402</b>		
<b>PART #</b>	<b>DESCRIPTION</b>	<b>QTY</b>
72-100008	WELDMENT, BENCH, EMBEDDED WITH ARM	2
	3 X 4 X 48” BULL-NOSE PLASTIC LUMBER	4
	3 X 4 X 48” ROUND CORNER PLASTIC LUMBER	3
72-100084	STRAP 2-1/2 X 12-3/4	1
72-100085	STRAP 2-1/2 X 9-1/4	1
71-0014	FASTENER KIT INCLUDES:	1
71-TP142SS	SCREW, BUTTON HEAD STAINLESS 14 X 2 SECURITY	44
71-532HEXKEY	HEX KEY, 5/32” SECURITY	1
71-532BIT	BIT, DRILL 5/32” DIAMETER	1
71-532HEXBIT	HEX BIT, 5/32” HEX SECURITY	1

<b>BILL OF MATERIAL – 150403</b>		
<b>PART #</b>	<b>DESCRIPTION</b>	<b>QTY</b>
72-100049	WELDMENT, BENCH, PORTABLE WITH ARM	2
	3 X 4 X 48” BULL-NOSE PLASTIC LUMBER	4
	3 X 4 X 48” ROUND CORNER PLASTIC LUMBER	3
72-100084	STRAP 2-1/2 X 12-3/4	1
72-100085	STRAP 2-1/2 X 9-1/4	1
71-0014	FASTENER KIT INCLUDES:	1
71-TP142SS	SCREW, BUTTON HEAD STAINLESS 14 X 2 SECURITY	44
71-532HEXKEY	HEX KEY, 5/32” SECURITY	1
71-532BIT	BIT, DRILL 5/32” DIAMETER	1
71-532HEXBIT	HEX BIT, 5/32” HEX SECURITY	1